

SMD POWER INDUCTOR CKCSA Series

磁胶电感 CKCSA 系列

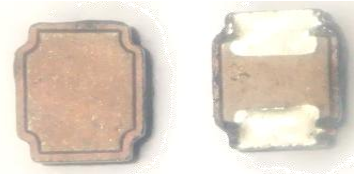
● FEATURES 特性

1.表面贴装,小型、超薄电感器,大功率,高饱和,低电阻之特性,合金材质磁芯.

The inductor designed as surface mounting, smallest and thinnest with high power, high saturation and low resistance, Alloy Core

2.磁性胶水涂敷结构极大减少了噪声, 闭合磁路结构设计,漏磁少,抗EMI能力强.

Magnetic-resin shielded structure reduces buzz noise to ultra-low levels, Closed magnetic circuit structure reduces magnetic leakage flux, high performance of anti-EMI.

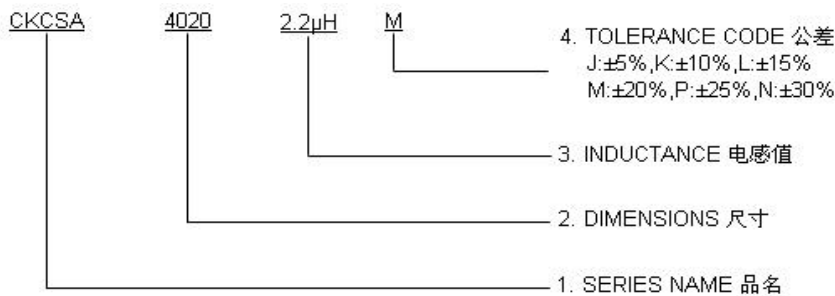


● APPLICATIONS 用途

PAD,笔记本电脑,服务器,音箱,网通,安防,手机,智能家居,储能设备等

PAD, Notebook, Server, audio, netcom, security, mobile phone, smart home, Energy product...

● PART NUMBERING SYSTEM 品名系统



● SHAPES AND DIMENSIONS 外形尺寸 (Unit:mm)

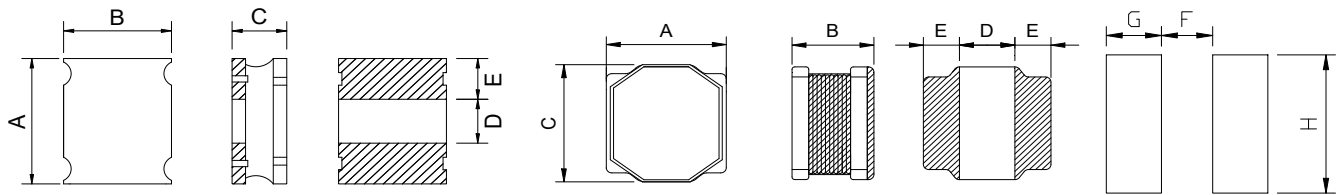


Fig 1

Fig 2

Recommended patterns

TYPE(型号)	A	B	C	D	E	F	G	H	Fig
CKCSA201610	2.0±0.3	1.6±0.3	1.05 Max.	0.8±0.2	0.6±0.2	0.4	1.2	2.2	1
CKCSA252010	2.5±0.3	2.0±0.3	1.05 Max.	0.94±0.3	0.83±0.3	0.4	1.4	2.5	1
CKCSA252012	2.5±0.3	2.0±0.3	1.25 Max.	0.94±0.3	0.83±0.3	0.4	1.4	2.5	1
CKCSA4020	4.0±0.2	2.0 Max.	4.0±0.2	1.4±0.3	1.3±0.3	0.9	1.9	3.7	2

● SPECIFICATION TABLE 规格特性表
CKCSA201610

PART NUMBER 品名	INDUCTANCE (uH) 电感值	DCR(Ω)直流电阻		Isat (A) 饱和电流		Irms (A) 温升电流	
		Max.	Typ.	Max.	Typ.	Max.	Typ.
CKCSA201610-0.47uH/N-011	0.47±30%	0.07	0.05	4.00	4.70	2.35	2.80
CKCSA201610-0.68uH/N	0.68±30%	0.072	0.06	3.50	4.00	2.30	2.70
CKCSA201610-1uH/N	1±30%	0.115	0.088	2.80	3.20	1.85	2.10
CKCSA201610-1.5uH/N	1.5±30%	0.155	0.13	1.95	2.30	1.50	1.70
CKCSA201610-2.2uH/M	2.2±20%	0.185	0.165	1.70	1.90	1.30	1.45
CKCSA201610-4.7uH/M	4.7±20%	0.39	0.34	1.20	1.50	0.95	1.00

CKCSA252010

PART NUMBER 品名	INDUCTANCE (uH) 电感值	DCR(Ω)直流电阻		Isat (A) 饱和电流		Irms (A) 温升电流	
		Max.	Typ.	Max.	Typ.	Max.	Typ.
CKCSA252010-0.47uH/N-010	0.47±30%	0.078	0.058	4.00	5.00	2.70	2.90
CKCSA252010-0.68uH/N-010	0.68±30%	0.092	0.065	3.00	3.50	2.50	2.90
CKCSA252010-1uH/N-010	1±30%	0.11	0.078	2.80	3.10	2.00	2.30
CKCSA252010-1.5uH/N-010	1.5±30%	0.13	0.100	2.10	2.50	1.80	2.00
CKCSA252010-2.2uH/M	2.2±20%	0.155	0.129	1.90	2.20	1.50	1.80
CKCSA252010-3.3uH/M	3.3±20%	0.235	0.196	1.60	1.80	1.20	1.40
CKCSA252010-4.7uH/M	4.7±20%	0.276	0.230	1.30	1.50	1.10	1.30

Remark: 1. All test data is reference to 25°C ambient.

2. Inductance Tested at 1MHz,0.2Vrms

3. Isat: Max.Value, DC current at which the inductance drops less than 30% from its value without current;
Typ. Value, DC current at which the inductance drops 30% from its value without current.

4. Irms: For Max. Value, $\Delta T < 40^{\circ}\text{C}$; for Typ. Value, ΔT is approximate 40°C .

5. Operating Temperature : $-40^{\circ}\text{C} \sim +125^{\circ}\text{C}$ (Including self - temperature rise)

6. Absolute maximum voltage: DC 15V



CKCSA252012

PART NUMBER 品名	INDUCTANCE (uH) 电感值	DCR(Ω)直流电阻		Isat (A) 饱和电流		Irms (A) 温升电流	
		Max.	Typ.	Max.	Typ.	Max.	Typ.
CKCSA252012-0.47uH/N-010	0.47±30%	0.085	0.06	4.90	5.60	2.80	3.20
CKCSA252012-0.68uH/N-010	0.68±30%	0.098	0.07	3.70	4.30	2.60	3.00
CKCSA252012-1uH/N-010	1±30%	0.102	0.074	2.80	3.40	2.40	2.80
CKCSA252012-1.5uH/N-010	1.5±30%	0.15	0.11	2.70	3.30	1.90	2.10
CKCSA252012-2.2uH/M	2.2±20%	0.12	0.10	2.30	2.60	1.90	2.15
CKCSA252012-3.3uH/M	3.3±20%	0.163	0.136	1.70	2.10	1.80	2.05
CKCSA252012-4.7uH/M	4.7±20%	0.26	0.225	1.60	1.90	1.25	1.45
CKCSA252012-6.8uH/M	6.8±20%	0.366	0.305	1.15	1.35	0.95	1.10
CKCSA252012-10uH/M	10±20%	0.48	0.435	1.10	1.35	0.85	1.00

CKCSA4020

PART NUMBER 品名	INDUCTANCE (uH) 电感值	DCR(Ω)直流电阻		Isat (A) 饱和电流		Irms (A) 温升电流	
		Max.	Typ.	Max.	Typ.	Max.	Typ.
CKCSA4020-1uH/N	1±30%	0.036	0.030	7.80	10.50	5.20	6.00
CKCSA4020-1.5uH/N	1.5±30%	0.043	0.034	7.40	9.30	4.60	5.00
CKCSA4020-2.2uH/M	2.2±20%	0.056	0.045	6.10	7.00	4.30	4.70
CKCSA4020-3.3uH/M	3.3±20%	0.090	0.070	4.70	5.50	3.00	3.50
CKCSA4020-4.7uH/M	4.7±20%	0.110	0.093	4.00	4.90	2.85	3.30
CKCSA4020-6.8uH/M	6.8±20%	0.156	0.134	3.00	3.90	2.40	2.80
CKCSA4020-8.2uH/M	8.2±20%	0.230	0.175	3.00	3.70	2.20	2.50
CKCSA4020-10uH/M	10±20%	0.240	0.200	2.80	3.50	2.00	2.35
CKCSA4020-22uH/M	22±20%	0.430	0.360	1.50	2.00	1.35	1.50

Remark: 1. All test data is reference to 25°C ambient.

2. Inductance Tested at 1MHz,0.2Vrms

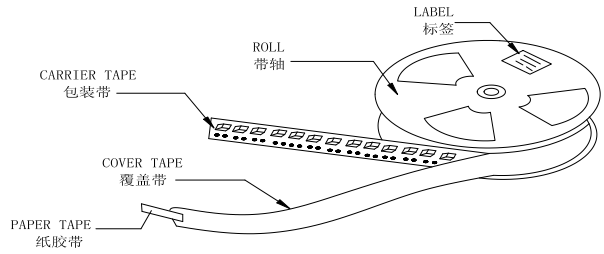
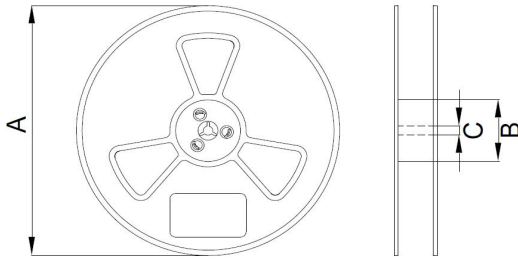
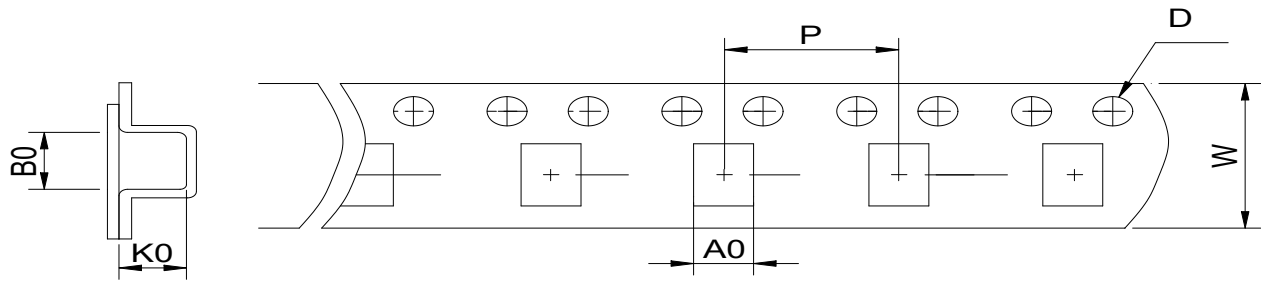
3. Isat: Max.Value, DC current at which the inductance drops less than 30% from its value without current;
Typ. Value, DC current at which the inductance drops 30% from its value without current.

4. Irms: For Max. Value, $\Delta T < 40^\circ\text{C}$; for Typ. Value, ΔT is approximate 40°C .

5. Operating Temperature : $-40^\circ\text{C} \sim +125^\circ\text{C}$ (Including self - temperature rise)

6. Absolute maximum voltage: DC 15V

● **PACKAGING SPECIFICATION 包装规格**



TYPE(型号)	Tape Dimension 载带尺寸(mm)						Reel Dimension 卷盘尺寸 (mm)			Quantity (Pcs/Reel) 数量 (个/卷)
	W	A0	B0	K0	D	P	A	B	C	
CKCSA201610	8	1.9	2.2	1.2	1.5	4	178	58	13	2000
CKCS252010	8	2.4	2.8	1.3	1.5	4	178	58	13	2000
CKCS252012	8	2.45	2.75	1.55	1.5	4	178	58	13	2000
CKCS4020	12	4.3	4.3	2.4	1.5	8	330	100	13	3000